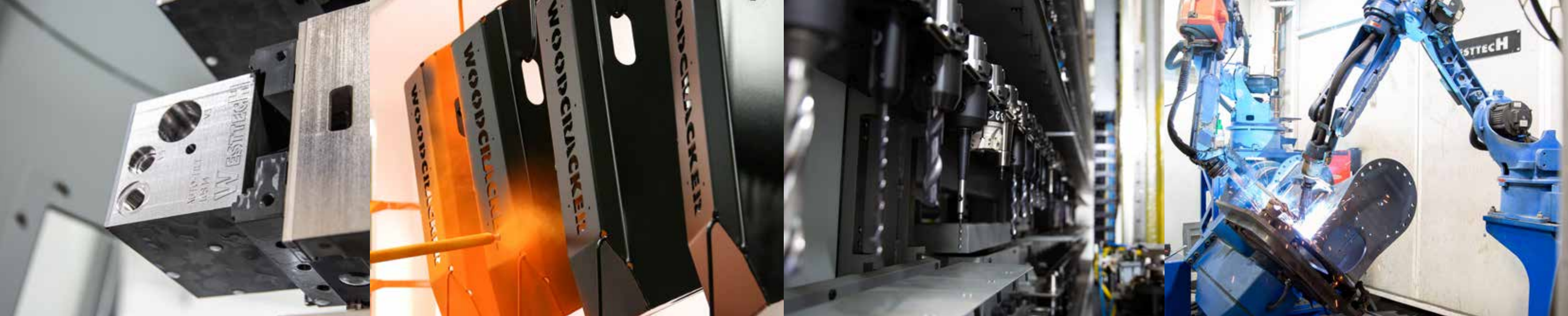


NORTH AMERICA

WOODCRACKER®

Forestry technology





DESIGNED TO PERFORM. BUILT TO LAST.

OUR VISION

We do more than developing and manufacturing robust forestry and landscaping equipment.

Individual customer service is our primary factor of success.

Every product range is developed by the experienced Westtech team of engineers, always in close collaboration with you - our customers.

It is our goal to continuously optimise the product range according to customer requirements and the application areas.

OUR PHILOSOPHY

Austrian quality products by Westtech.

Development and production from one source guarantee the highest quality standards and the associated long service life of the products.

CONTENT

CUTTING		
WOODCRACKER® C	Tree shear for excavator	4 - 7
	Tree shear suitable for Sennebogen quick coupler	8 - 9
WOODCRACKER® CL	Cutting head for excavator	10 - 13
	Cutting head for Skid Steer or loader	14 - 15
SAWING		
WOODCRACKER® CS smart	Grapple saw for roto-telehandler	16 - 19
WOODCRACKER® CS crane	Grapple saw for knuckle boom truck	20 - 21
	Grapple saw with teleadapter for telehandler	22 - 23
	Grapple saw with stepping foot for excavator	24 - 25
WOODCRACKER® CS compact	Grapple saw for excavator	26 - 29
WOODGRIPPER® WG	7-finger-gripper with saw unit for excavator	30 - 33
	3-finger-gripper for excavator	34 - 35
WOODCRACKER® CS dualGrip	Grapple saw for excavator	36 - 39
SPLITTING		
WOODCRACKER® L	Wood splitter	40 - 43
WOODCRACKER® W	Wood splitting tongs	44 - 47
CLEARING		
WOODCRACKER® R	Stump shear	48 - 51
WOODCRACKER® G	Clearing rake	52 - 55
FELLING		
WOODCRACKER® CS flexHead	Felling system	56 - 57



TOUGH. RELIABLE. PRODUCTIVE.



CHECK OUT YOUR BENEFITS!

- Decades of experience – **LEADER IN THE INDUSTRY!**
- Transform any excavator into a high-performance felling machine. Choose the excavator for your needs! Whether long reach, material handler, compact, heavy-duty or on wheels - it's up to you!
- Innovative hydraulic system that significantly increases workflow speed.
- Fast and efficient shear operating cycle time for maximum productivity.
- The blade is low-wear and resistant to stones and dirt. Easy Workflow.
- Durable KTL powder coating for long-term corrosion protection.
- Components made from Hardox® steel for extreme strength and wear resistance.

MULTIPLE SIZES FOR UNLIMITED APPLICATIONS!



Woodcracker® C350 on Menzi Muck walking excavator - streambank maintenance



Woodcracker® C450 on Sennebogen 825 E crawler excavator - roadside maintenance



Woodcracker® C350 on Wacker Neuson EW100 wheel excavator - tree removal in the garden



Woodcracker® C350 on Hyundai 215 low ground crawler excavator - in the swamp

TECHNICAL DATA



To operate the products, the excavator needs two double acting hydraulic circuits + 24V DC.

WOODCRACKER® C	C 250	C 300	C 350	C 450	C 550	C 650
Cutting diameter soft wood (in)	13	14	16	20	24	28
Cutting diameter hard wood (in)	11	12	14	18	22	26
Gripper opening (in)	37	56	56	63	63	68
Shear opening (in)	18	22	28	31	35	42
Deadweight (incl. flange plate and Power-Tiltator) ¹⁾ (lbs)	2,300	2,600	3,650	5,450	5,850	7,050
Recommended pump flow capacity main circuit ¹⁾ (gpm)	13 - 26	18 - 40	18 - 40	21 - 42	26 - 50	40 - 66
Recommended pump flow capacity auxiliary circuit ¹⁾ (gpm)	9 - 13	12 - 16	12 - 16	12 - 16	13 - 18	13 - 18
Recommended operating pressure (psi)	4,100	4,100	4,100	4,100	4,100	4,350
Service weight of carrier vehicle ²⁾ (lbs)	22,000 - 33,100	26,460 - 39,700	30,900 - 44,100	44,100 - 55,200	53,000 - 66,200	61,800 - 88,200
Multigrip	integrated	integrated	integrated	integrated	integrated	integrated
Power-Tiltator	-	-	-	•	•	•

Technical data and illustrations are not binding. Subject to changes for reasons of further development.

APPLICATION

Land clearing

- Safety tree removal for urban areas.
- Construction site clearing.
- Storm damage processing and natural disaster cleanup.

Roadside maintenance

- Thanks to the shear, the work process is safe and controlled.
- Reduced manual work leads to a lower risk of injury and improved operator safety.

Infrastructure

- In places, that require to remove the tree in an upright position (to protect the surrounding area).
- Maintenance along traffic roads and routes.

¹⁾ Depending on operating mode or equipment. ²⁾ Depending on carrier vehicle's specifications. • available - not available

THE PERFECT FIT!

WOODCRACKER® C ON SENNEBOGEN



VIDEO

TECHNICAL DATA



ONLINE



CHECK OUT YOUR BENEFITS!

- Machine delivered ready-to-use with transport box and quick coupler.
- Woodcracker C300 – the powerful tool - handles wood up to 14 in.
- No chain jumping and low-wear shear system for long-lasting performance.
- Durable KTL powder coating for long-term corrosion protection.



Woodcracker® C300 on Sennebogen 718 crawler excavator - land clearing



Woodcracker® C300 on Sennebogen 718 crawler excavator - construction site clearing



Woodcracker® C300 on Sennebogen 718 crawler excavator - safety tree felling



Woodcracker® C300 on Sennebogen 718 crawler excavator - roadside maintenance

WOODCRACKER® C	C 300
Cutting diameter soft wood (in)	14
Cutting diameter hard wood (in)	12
Gripper opening (in)	56
Shear opening (in)	22
Deadweight incl. quick coupler (lbs)	1,700
Deadweight incl. quick coupler and accumulator (lbs)	1,980
Recommended pump flow capacity main circuit ¹⁾ (gpm)	18 - 40
Recommended pump flow capacity auxiliary circuit ¹⁾ (gpm)	12 - 16
Recommended operating pressure (psi)	4,100
Suitable for Sennebogen model	718 / 728
Multigrip	integrated
Transport box	included
Optional: Accumulator (not included in the deadweight)	•

Technical data and illustrations are not binding. Subject to changes for reasons of further development.

¹⁾ Depending on carrier vehicle's specifications. • available - not available



UPGRADE YOUR EXCAVATOR.

VARIOUS MOUNTING OPTIONS

For your excavator, skid steer or loader -
Power where you need it!

ACCUMULATOR

- speeds up your workflow
- collect multiple trees



POWERFUL GRIPPER

- with large opening stroke
- large cutting capacity

EASY REPLACEABLE BLADE

- heavy-duty blade
- quick and easy to replace
- resistant to dirt



CHECK OUT YOUR BENEFITS!

- Easy to use – simple and intuitive operation.
- Perfect cost-benefit ratio.
- Lightweight.
- Turn a mini excavator into a high-performance cutting machine.
- Efficient mechanical operation with low operating costs.
- Durable KTL powder coating for long-term corrosion protection.
- Components made from Hardox® steel for extreme strength and wear resistance.

MODULAR SYSTEM



Woodcracker CL190



Woodcracker CL260



Woodcracker CL320



Woodcracker CL190 +
accumulator



Woodcracker CL260 +
accumulator



Woodcracker CL320 +
accumulator

TRANSFORM YOUR SMALL EXCAVATOR INTO A CUTTING MACHINE!



VIDEO

TECHNICAL DATA



WOODCRACKER® CL	CL 140	CL 190	CL 260	CL 320
Cutting diameter soft wood (in)	7	10	13	16
Cutting diameter hard wood (in)	6	7	10	13
Gripper opening = shear opening (in)	17	27	30	42
Deadweight incl. flange plate (lbs)	300	520	880	1,540
Deadweight incl. flange plate incl. accumulator (lbs)	-	750	1,190	2,090
Recommended pump flow capacity main circuit ¹⁾ (gpm)	5 - 16	11 - 21	13 - 26	18 - 40
Recommended pump flow capacity auxiliary circuit ¹⁾ (gpm)	-	5 - 8	11 - 16	12 - 16
Recommended operating pressure main circuit (psi)	2,900	3,600	4,100	4,100
Recommended operating pressure auxiliary circuit (psi)	-	2,900	2,900	2,900
Service weight of carrier vehicle ²⁾ (lbs)	2,200 - 8,800	5,500 - 16,500	13,300 - 30,900	26,500 - 44,100
Optional: Accumulator	-	•	•	•

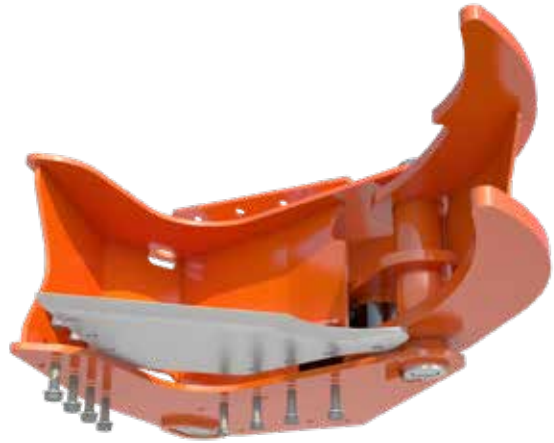
Technical data and illustrations are not binding. Subject to changes for reasons of further development.

¹⁾ Depending on operating mode or equipment. ²⁾ Depending on carrier vehicle's specifications. • available - not available

APPLICATION AREAS

Land clearing

- Fast harvest of small trees and bushes.
- In rough terrain, hill areas and in bog areas.
- Cultivation and landscape maintenance.
- For agricultural use.
- Storm damage processing and natural disaster cleanup.



easily replaceable blade



Woodcracker® CL260 on JCB Hydradig wheel excavator - with timber forwarding trailer for efficient working



Woodcracker® CL320 on Kobelco SK140 crawler excavator - harvest of small trees



Woodcracker® CL140 on Takeuchi TB225 crawler excavator - removal of small trees and bushes



Woodcracker® CL260 on JCB Hydradig wheel bagger - combined with timber forwarding trailer



POWER WHERE YOU NEED IT!

TECHNICAL DATA



To operate this product, the excavator needs one double acting hydraulic circuit + 24V DC.

WOODCRACKER® CL	CL 260 Skid Steer
Cutting diameter soft wood (in)	13
Cutting diameter hard wood (in)	10
Gripper opening = shear opening (in)	30
Deadweight (with accumulator) (lbs)	1,100 - 1,700
Recommended pump flow capacity main circuit ¹⁾ (gpm)	13 - 26
Recommended pump flow capacity auxiliary circuit ¹⁾ (gpm)	11 - 16
Recommended operating pressure main circuit (psi)	4,100
Recommended operating pressure auxiliary circuit (psi)	2,900
Service weight of carrier vehicle ²⁾ (lbs)	6,000 - 12,000

Technical data and illustrations are not binding. Subject to changes for reasons of further development.

CHECK OUT YOUR BENEFITS!

- Turn your Skid Steer or loader into a cutting machine.
- Cut - hold - and drive.
- Perfect cost-benefit ratio.
- Lightweight.
- Efficient mechanical operation with low operating costs.
- Easy to use – simple and intuitive operation.
- Durable KTL powder coating for long-term corrosion protection.
- Components made from Hardox® steel for extreme strength and wear resistance.



Woodcracker® CL260 on Takeuchi Skid Steer - cut - hold - drive



Woodcracker® CL260 on Bobcat Skid Steer - easy to handle in tight spaces



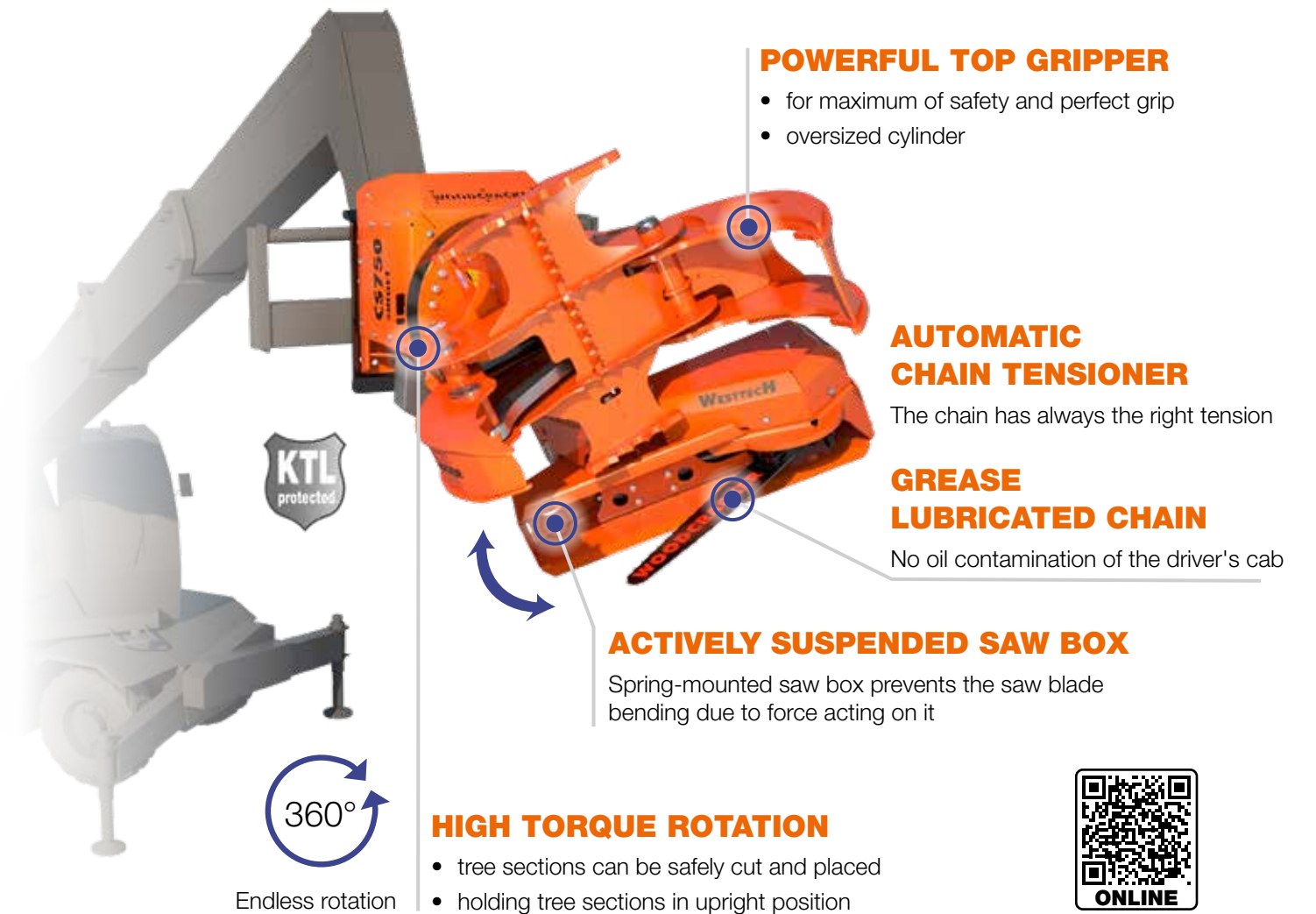
Woodcracker® CL260 on a Magni telehandler - various attachment options



Woodcracker® CL190 on a farm loader - for agricultural use



TAKE IT DOWN, THE EASY WAY.



CHECK OUT YOUR BENEFITS!

- Tree felling in urban areas is a demanding and dangerous job. The CS smart offers maximum safety combined with outstanding efficiency.
- Decades of experience – **LEADER IN THE INDUSTRY!**
- Smooth handling: grip - hold - saw.
- Plug-and-play installation for quick setup.
- Safe removal of tree sections.
- Reduced manual work leads to a lower risk of injury and improved operator safety.
- Innovative hydraulic system that significantly increases workflow speed.
- Safely remove parts of trees that overhang roofs, obstacles, and pool areas.
- Durable KTL powder coating for long-term corrosion protection.
- Components made from Hardox® steel for extreme strength and long lifetime.



saw unit has a swinging chassis with active suspension

HOLD IT, CUT IT AND HANDLE IT LIKE A PRO!



Woodcracker® CS750 smart on Merlo roto-telehandler - application in Florida



Woodcracker® CS750 smart on Manitou roto-telehandler - upright removal of tree sections

TECHNICAL DATA



WOODCRACKER® CS smart	CS 615 smart	CS 750 smart
Cutting diameter (in)	24	30
Gripper opening (in)	50	50
Tiltator	endlessly rotatable	endlessly rotatable
Deadweight (incl. adapter plate) (lbs)	1,650	2,200
Recommended pump flow capacity ¹⁾ (gpm)	13 - 24	17 - 29
Recommended operating pressure ¹⁾ (psi)	2,900 - 4,000	3,300 - 4,000
Service weight of carrier vehicle ²⁾ (tlbs)	22,100 - 44,100	33,100 - 55,200
Saw unit	suspended	actively suspended
Chain lubrication of saw	grease	grease
Service kit	included	included

Technical data and illustrations are not binding. Subject to changes for reasons of further development.

APPLICATION

Land clearing

- Safety tree removal for urban areas.
- Storm damage processing and natural disaster cleanup.

Roadside maintenance

- Safe removal of trees in several parts.
- Reduced manual work leads to a lower risk of injury and improved operator safety.
- Felling of dangerous trees.

Infrastructure

- Problematic tree fellings in urban and residential areas.
- Maintenance work along traffic roads and routes.



Woodcracker® CS750 smart on a Magni roto-telehandler - large diameter



Woodcracker® CS615 smart on Magni roto-telehandler - high-reach work

¹⁾ Depending on operating mode or equipment. ²⁾ Depending on carrier vehicle's specifications.



TURN YOUR TRUCK INTO
A FELLING POWERHOUSE!

TECHNICAL DATA



To operate this product, the excavator needs one double acting hydraulic circuit.

WOODCRACKER® CS crane	CS 620 crane
Cutting diameter (in)	24
Gripper opening (in)	50
Deadweight (lbs)	920
Recommended pump flow capacity ¹⁾ (gpm)	13 - 24
Recommended operating pressure ¹⁾ (psi)	2,900 - 4,100
Chain lubrication of saw	oil
Service kit	included
Transport box	included

¹⁾ Depending on operating mode or equipment.

Technical data and illustrations are not binding. Subject to changes for reasons of further development.

THE ONE AND ONLY.



CHECK OUT YOUR BENEFITS!

- Fast to set up, quick to move, speedy on the road – all without a low-loader.
- With the CS620 crane, your knuckleboom becomes an unlimited tree-felling machine.
- Durable KTL powder coating for long-term corrosion protection.
- Components made from Hardox® steel for extreme strength and long lifetime.



Woodcracker® CS620 crane on knuckle boom truck



THE FLEXIBLE FELLING COMBINATION FOR EXTRA REACH.

TECHNICAL DATA

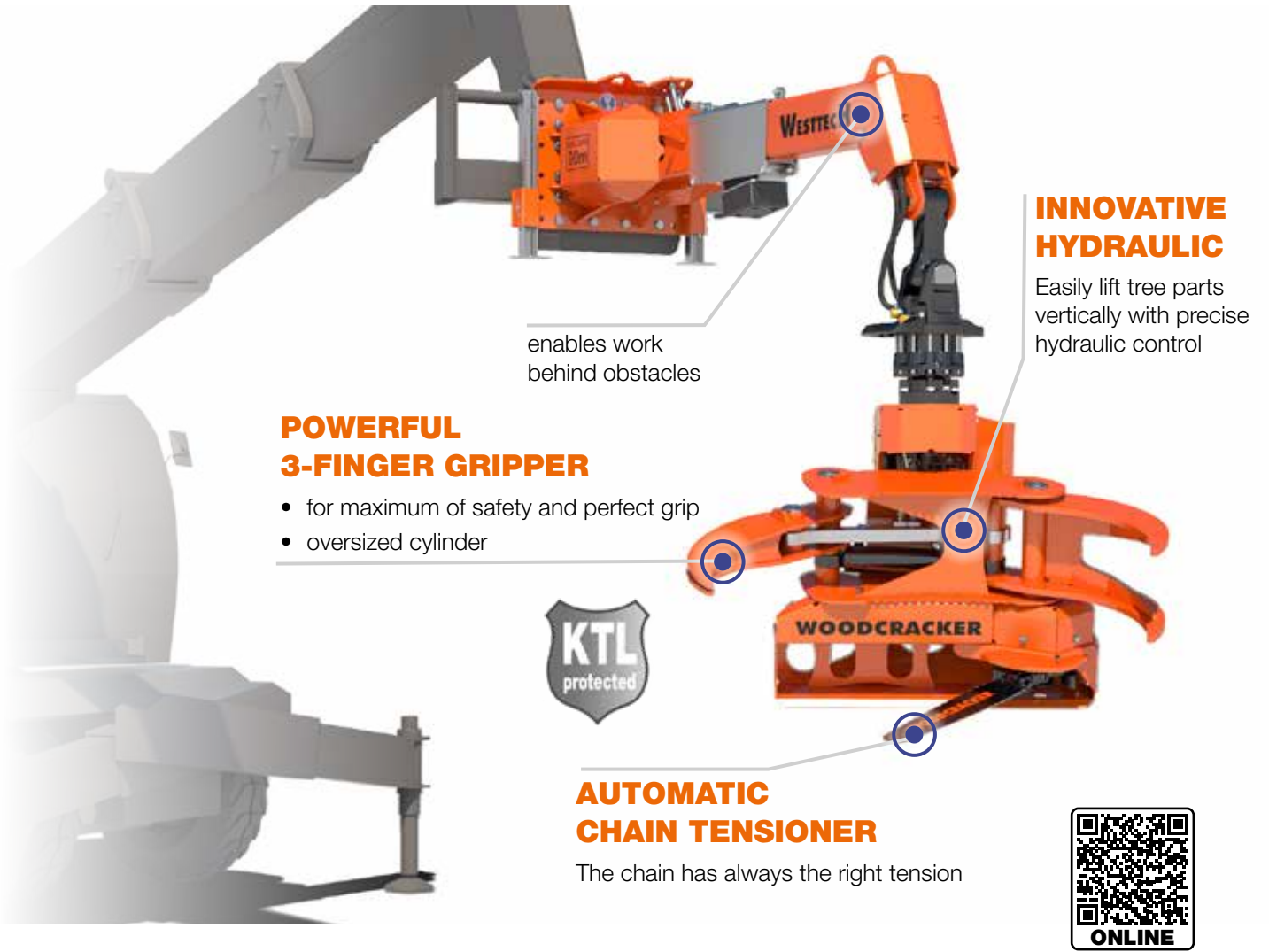


WOODCRACKER® CS crane	CS 620 crane + TA
Cutting diameter (in)	24
Gripper opening (in)	50
Extension working area (in)	up to 82
Deadweight (incl. adapter plate) (lbs)	1,830
Recommended pump flow capacity ²⁾ (gpm)	13 - 24
Recommended operating pressure ²⁾ (psi)	2,900 - 4,100
Chain lubrication of saw	oil
Permitted load ¹⁾ (lbs)	4,400
Service weight of carrier vehicle ³⁾ (lbs)	33,100 - 55,200
Service kit	included

¹⁾ Gross figures without attachment. Depending on carrier vehicle weight. ²⁾ Depending on operating mode or equipment. ³⁾ Depending on specifications of the operation vehicle.

Technical data and illustrations are not binding. Subject to changes for reasons of further development.

ELEVATE YOUR WORK.



CHECK OUT YOUR BENEFITS!

- Reach every angle you need.
- Perfect for horizontal limbs.
- Extended reach, lightweight design.
- Ideal for removing sections from tree crowns.
- Innovative hydraulics allow sections to be removed in a standing position.
- The perfect addition for the teleloader, besides the CS smart.
- Durable KTL powder coating for long-term corrosion protection.
- Components made from Hardox® steel for extreme strength and long lifetime.



Woodcracker® CS620 crane with extension on a telehandler



WORK SAFELY ON
STEEP GROUND!

TECHNICAL DATA



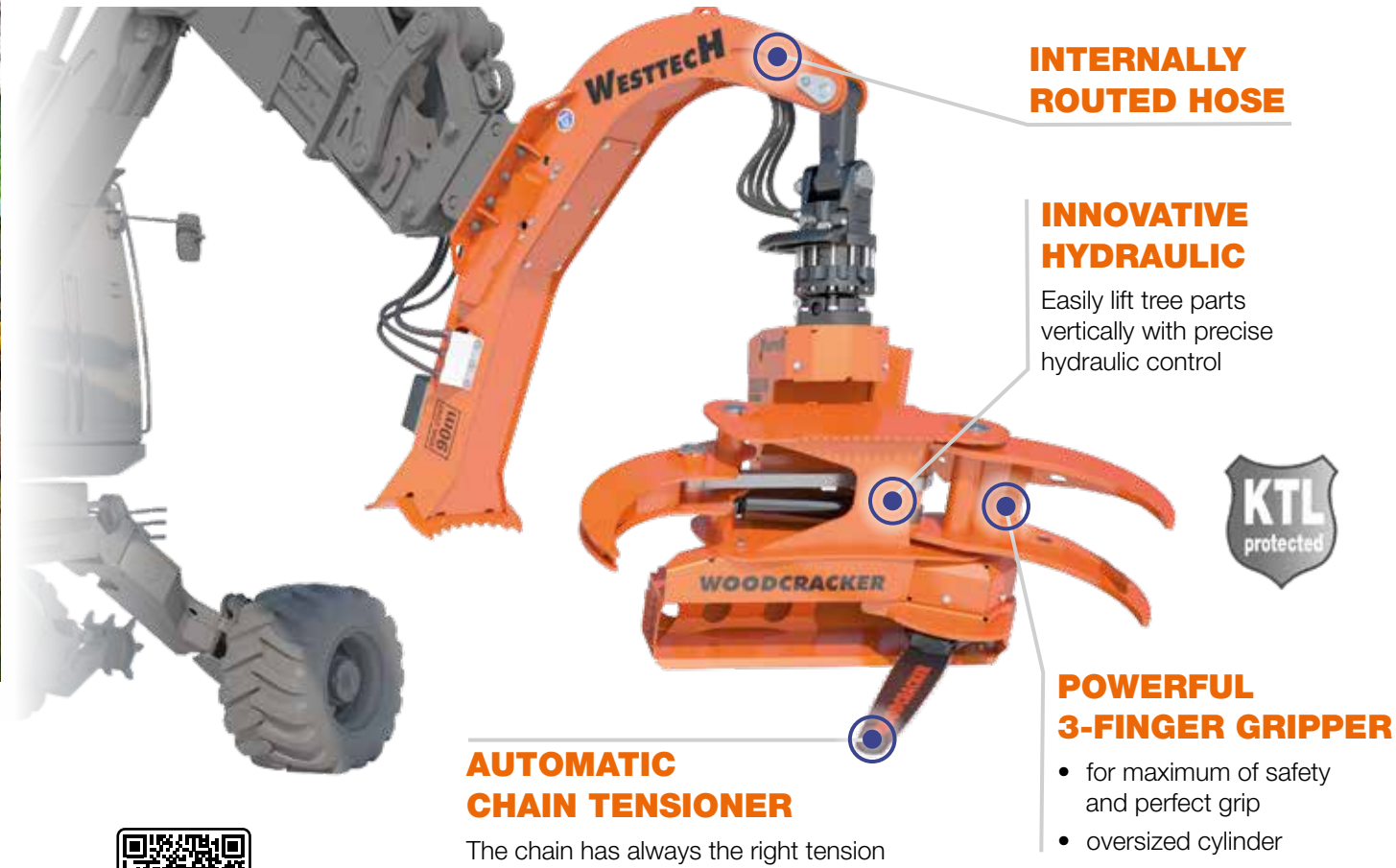
To operate the products, the excavator needs two double acting hydraulic circuits + 24V DC.

WOODCRACKER® CS crane	CS 620 crane + SF 12
Cutting diameter (in)	24
Gripper opening (in)	50
Deadweight (incl. flange plate) (lbs)	1,760
Recommended pump flow capacity main circuit ¹⁾ (gpm)	13 - 24
Recommended pump flow capacity auxiliary circuit ¹⁾ (gpm)	8 - 11
Recommended operating pressure main circuit ¹⁾ (psi)	2,900 - 4,100
Recommended operating pressure auxiliary circuit ¹⁾ (psi)	2,900 - 3,300
Chain lubrication of saw	oil
Service weight of carrier vehicle ²⁾ (lbs)	26,500 - 48,500
Service kit	included

¹⁾ Depending on operating mode or equipment. ²⁾ Depending on carrier vehicle's specifications.

Technical data and illustrations are not binding. Subject to changes for reasons of further development.

TECHNOLOGY
ONE STEP FORWARD.



CHECK OUT YOUR BENEFITS!

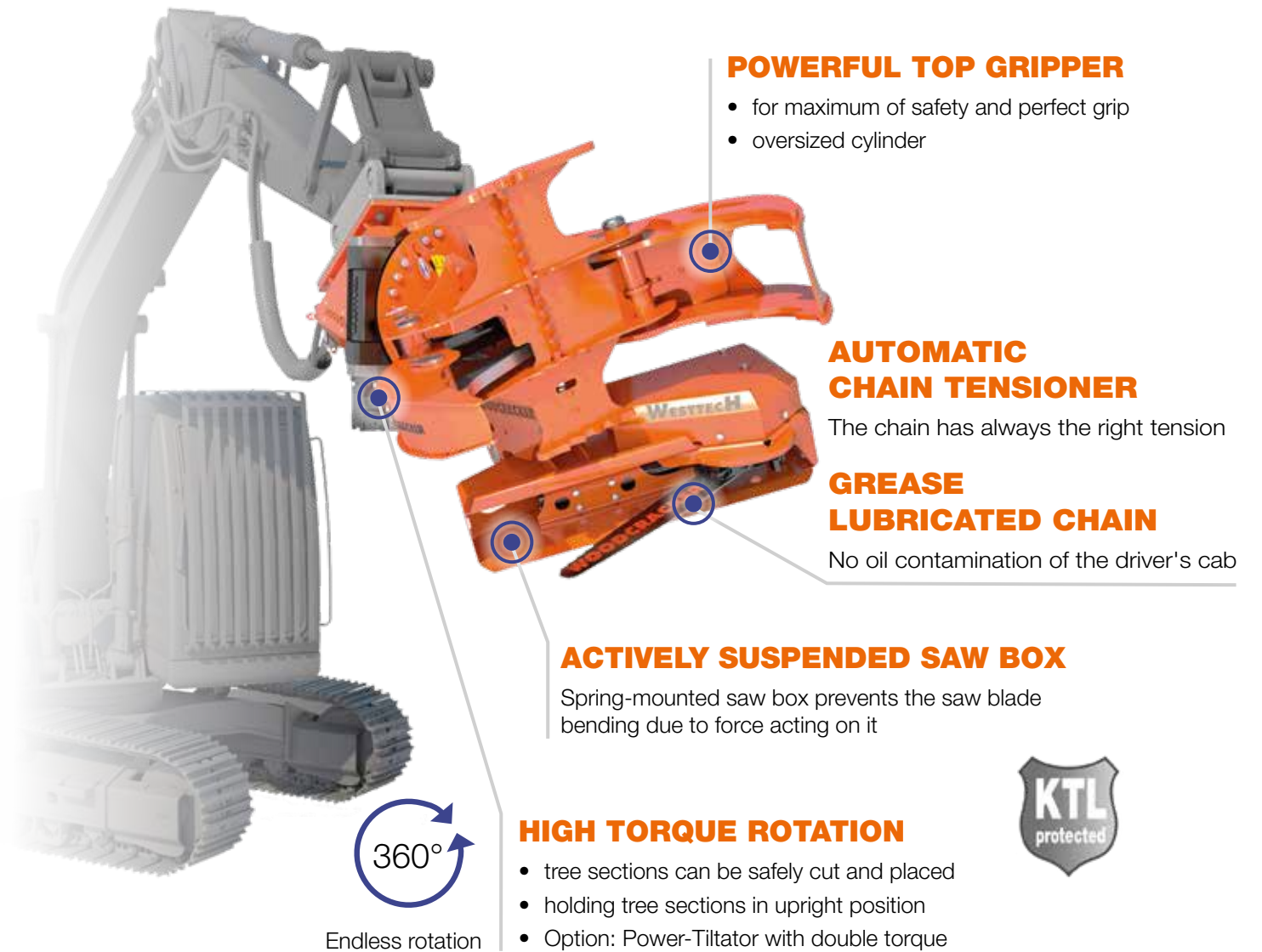
- Woodcracker CS620 grapple saw + SF12 stepping foot – built for rough terrain
- Suitable for all standard excavators.
- Achieve a large felling diameter with mid-sized excavators.
- Ideal cutting diameter-to-weight ratio.
- Durable KTL powder coating for long-term corrosion protection.
- Components made from Hardox® steel for extreme strength and wear resistance.



Woodcracker® CS620 crane with stepping foot on KAISER walking excavator S12



ENGINEERED TO PERFORM.



CHECK OUT YOUR BENEFITS!

- Good diameter-to-weight ratio.
- Relatively large diameters possible with mid-sized excavators.
- Choose the excavator that fits your task.
- Clean cuts.
- Lightweight powerhouse.
- Fast processing.
- Durable KTL powder coating for long-term corrosion protection.
- Components made from Hardox® steel for extreme strength and wear resistance.

COMPACT PROFESSIONAL SAW FOR TREE FELLING.



TECHNICAL DATA



To operate the products, the excavator needs two double hydraulic circuits + 24V DC.

WOODCRACKER® CS compact	CS 545 compact	CS 610 compact
Cutting diameter (in)	21	24
Gripper opening (in)	50	50
Tiltator	endlessly rotatable	endlessly rotatable
Deadweight (incl. flange plate and Power-Tiltator) (lbs)	1,830	2,540
Recommended pump flow capacity main circuit ¹⁾ (gpm)	13 - 25	17 - 29
Recommended pump flow capacity auxiliary circuit ¹⁾ (gpm)	9 - 13	11 - 16
Recommended operating pressure ¹⁾ (psi)	2,900 - 4,000	3,300 - 4,000
Service weight of carrier vehicle ²⁾ (lbs)	17,600 - 33,000	33,000 - 44,100
Saw unit	suspended	actively suspended
Chain lubrication of saw	grease	grease
Service kit	included	included
Optional: Power-Tiltator	-	•

¹⁾ Depending on operating mode or equipment. ²⁾ Depending on carrier vehicle's specifications. • available - not available

APPLICATION

Land clearing

- Safety tree removal for urban areas.
- Quick processing of the already logged tree lying on the ground.
- Storm damage processing and natural disaster cleanup.

Roadside maintenance

- Safe removal of trees in several parts.
- Reduced manual work leads to a lower risk of injury and improved operator safety.
- Felling of dangerous trees.



saw unit has a swinging chassis with active suspension



Woodcracker® CS610 compact on Komatsu 225 crawler excavator - high-diameter sawing



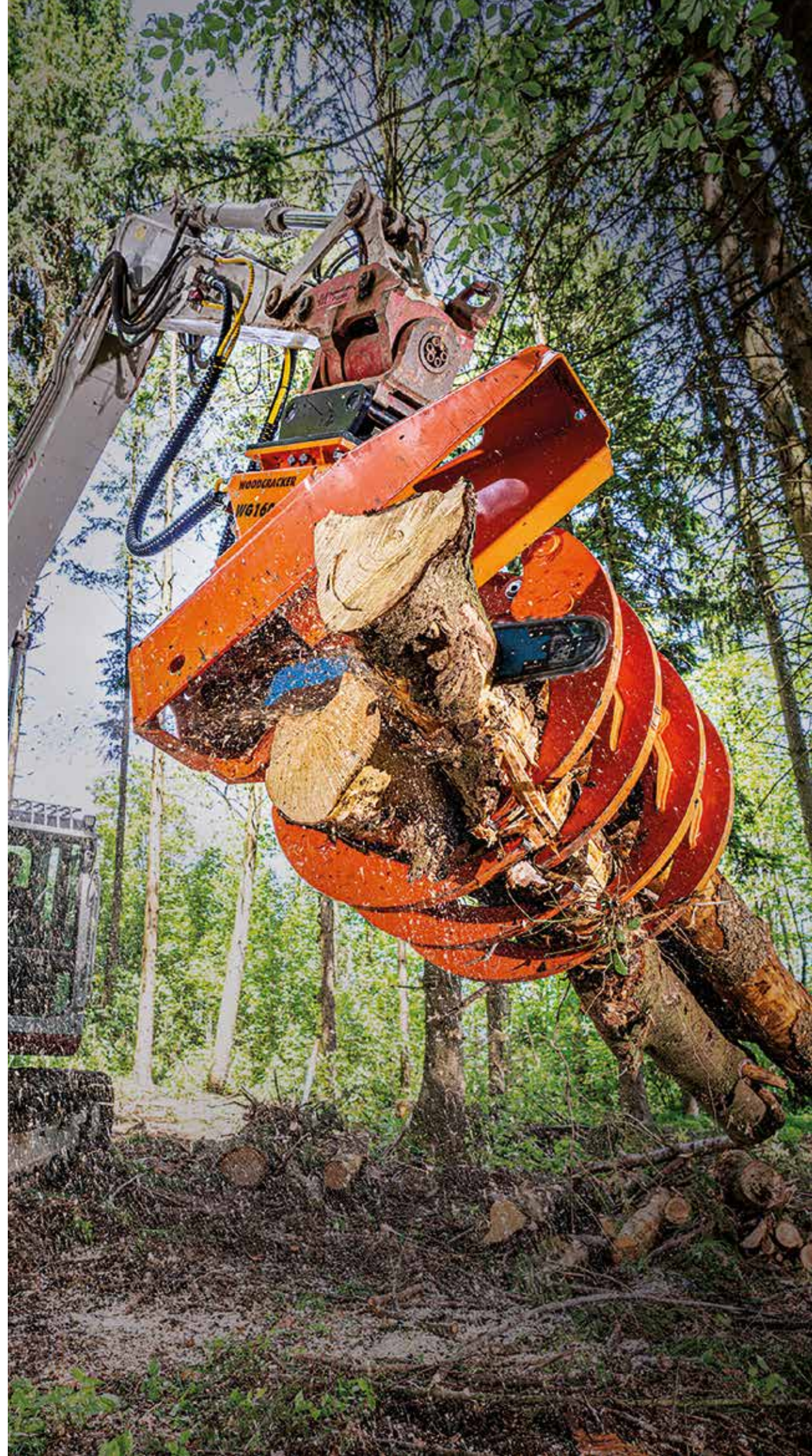
Woodcracker® CS610 on LH R914 crawler excavator - safe grip during the sawing process



Woodcracker® CS545 compact on Kubota KX80 crawler excavator - safe holding of stem material



Woodcracker® CS545 compact on Kobelco SK140 crawler excavator - high sawing performance



THE ALL-ROUNDER!



CHECK OUT YOUR BENEFITS!

- Multitool: felling & cleanup in one step.
- High gripping force: boosted power with oversized cylinder.
- Perfect mounting angle: precise felling & processing.
- Endless rotation: 360°.
- Easy workflow: simple operation.
- Ultimate multitool.
- Durable KTL powder coating for long-term corrosion protection.
- Components made from Hardox® steel for extreme strength and wear resistance.



TECHNICAL DATA



To operate the products, the excavator needs two double acting hydraulic circuits + 24V DC.

WOODGRIPPER WG with saw unit	WG 1600 ⁷
Gripper opening stroke (in)	63
Deadweight (incl. flange plate and Power-Tiltator) (lb)	3,300
Recommended pump flow capacity ¹⁾ (gpm)	24 - 50
Recommended operating pressure ¹⁾ (psi)	1,450 - 4,350
Service weight of carrier vehicle rigid ²⁾ (lb)	26,500 - 48,500
Service weight of carrier vehicle cardanic ²⁾ (lb)	26,500 - 48,500
Power-Tiltator	•
Service kit	included

¹⁾ Depending on operating mode or equipment. ²⁾ Depending on specifications of the operation vehicle. • available - not available

APPLICATION AREAS

- Collecting/Loading/Manipulating.
- For tree trunks, branches or brushwood.
- Storm damage processing and natural disaster cleanup.
- Processing of already felled trees.
- Processing of windthrown timber.
- Loading of logs.
- Gripping and sawing pieces of wood.
- Transport preparation, wood is cut into suitable lengths.

Technical data and illustrations are not binding. Subject to changes for reasons of further development.



Woodcracker® WG1600 on Takeuchi TB2150 crawler excavator - enables fast material handling



Woodcracker® WG1600 on Takeuchi TB2150 crawler excavator - optimal attachment angle for felling and processing



Woodcracker® WG1600 on Liebherr LH22 wheel excavator - high sawing performance



Woodcracker® WG1600 on Liebherr LH22 wheel excavator - tree felling



THE WOOD GRIPPER FOR MATERIAL HANDLING.

TECHNICAL DATA



To operate the products, the excavator needs two double acting hydraulic circuits + 24V DC.

WOODGRIPPER WG	WG 1270	WG 1720
Gripper opening stroke (in)	50	68
Deadweight (incl. Rotator) (lbs)	1,230	2,320
Recommended pump flow capacity ¹⁾ (gpm)	8 - 24	16 - 50
Recommended operating pressure ¹⁾ (psi)	2,600 – 4,350	1,450 – 4,350
Service weight of carrier vehicle rigid ²⁾ (lb)	6,600 – 22,100	33,100 – 61,800
Service weight of carrier vehicle cardanic ²⁾ (lb)	6,600 – 33,100	33,100 – 132,300
Rotator	RT10	RTW28
Optional: Saw unit (included service kit)	•	-

¹⁾ Depending on operating mode or equipment. ²⁾ Depending on specifications of the operation vehicle.
• available - not available

Technical data and illustrations are not binding. Subject to changes for reasons of further development.

STRONG GRIP. SMOOTH HANDLING.

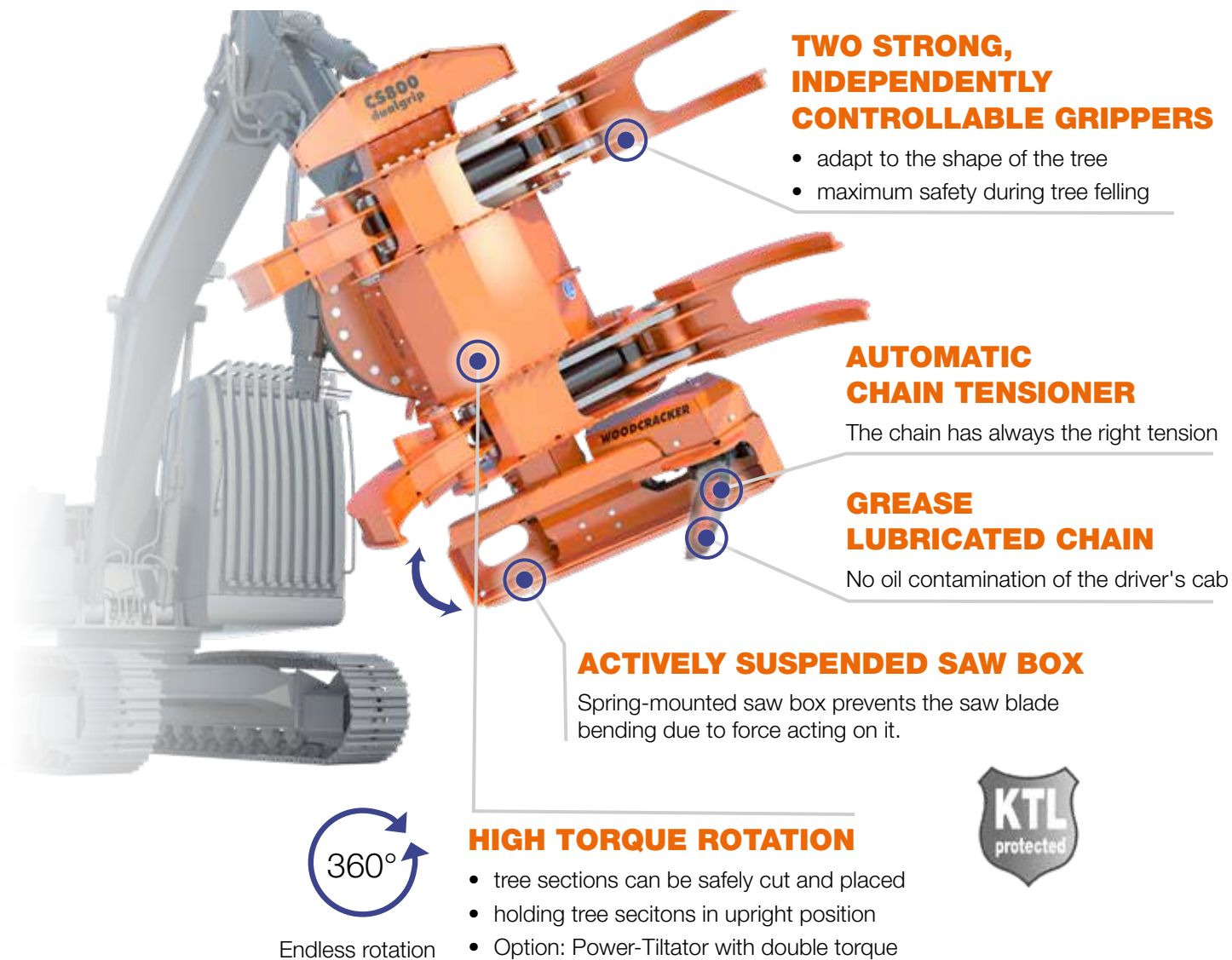


CHECK OUT YOUR BENEFITS!

- High gripping force: boosted power with oversized cylinder.
- Endless rotation: 360°
- Easy workflow: simple operation.
- Saw unit available as an option for the WG1270.
- Durable KTL powder coating for long-term corrosion protection.
- Components made from Hardox® steel for extreme strength and wear resistance.



THE MOST POWERFUL IN OUR LINEUP.



CHECK OUT YOUR BENEFITS!

- Reduced manual work leads to a lower risk of injury and improves operator safety.
- Decades of experience – **LEADER IN THE INDUSTRY!**
- Professional tree felling machine.
- Controlled and safe tree removal.
- Large tree removal – ideal for big trees.
- Heavy-duty applications.
- Less weight, bigger diameter.
- Durable KTL powder coating for long-term corrosion protection.
- Components made from Hardox® steel for extreme strength and wear resistance.



THE STRONG GRAPPLE SAW THAT HANDLES LARGE TREES SAFELY!



TECHNICAL DATA



To operate the products, the excavator needs two double acting hydraulic circuits + 24V DC.

WOODCRACKER® CS dualGrip	CS 800 dualGrip
Cutting diameter (in)	31.5
Gripper opening (in)	63
Deadweight (fully equipped) ¹⁾ (lbs)	3,920
Recommended pump flow capacity ¹⁾ (gpm.)	32 - 45
Recommended pump flow capacity for optional functions ¹⁾ (gpm)	13 – 18
Recommended operating pressure (psi)	4,000
Service weight of carrier vehicle ²⁾ (lbs)	44,100 - 61,800
Saw unit	actively suspended
Chain lubrication of saw	grease
Power-Tiltator	endlessly rotatable
Service kit	included

Technical data and illustrations are not binding. Subject to changes for reasons of further development.

APPLICATION AREAS

- Safety tree removal for urban areas.
- Storm damage processing and natural disaster cleanup.
- Safe removal of trees in segments, in every position or angle.
- Harvest of tree trunks.
- In rough terrain, hill areas and swamplands.
- Maintenance work along traffic roads and routes.
- Quick processing of the already logged tree lying on the ground.
- Tree felling due to safety reasons.
- Quick processing of the already logged tree lying on the ground.



Woodcracker® CS800 dualGrip on Kobelco SK300 crawler excavator - the strong grippers hold the tree firmly



Woodcracker® CS800 dualGrip on Sennebogen 825 crawler excavator - the grapple adapts to the tree



Woodcracker® CS800 dualGrip on Liebherr LH30 crawler excavator - handling even the thickest logs

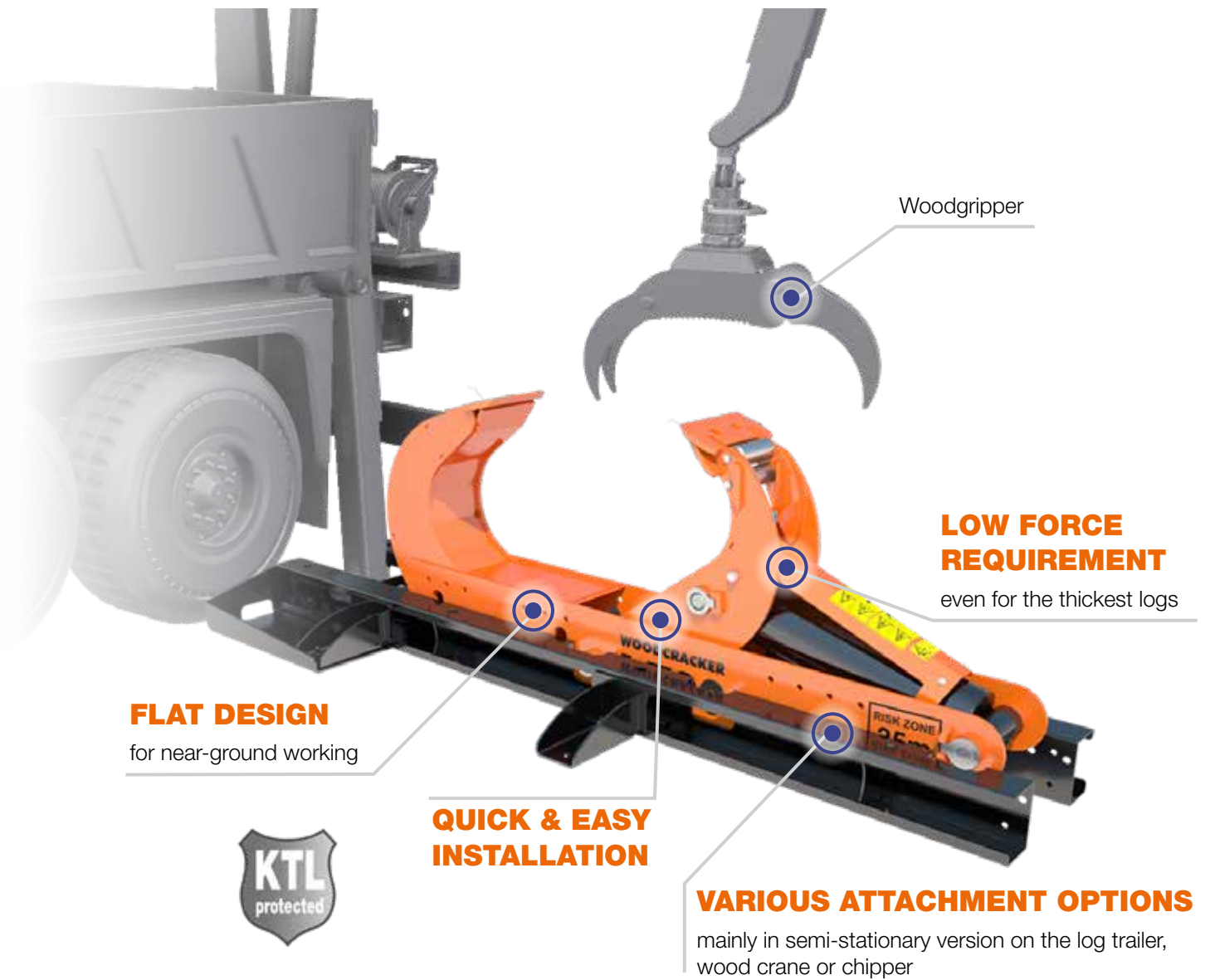


Woodcracker® CS800 dualGrip on CAT325 crawler excavator - high sawing performance

¹⁾ Depending on operating mode or equipment. ²⁾ Depending on carrier vehicle's specifications.



SPLIT WOOD THE EASY WAY.



CHECK OUT YOUR BENEFITS!

- Optimal cost/benefit ratio.
- Decades of experience – **LEADER IN THE INDUSTRY!**
- Simple design.
- Pre-split for chippers or for firewood.
- Break up oversized logs.
- Multiple mounting options.
- Robust and proven technology – Low-wear and low-service.
- Durable KTL powder coating for long-term corrosion protection.
- Components made from Hardox® steel for extreme strength and wear resistance.



ONLINE

FAST, COMPACT, TRAILER-READY WOOD SPLITTING!



TECHNICAL DATA



To operate this product, the excavator needs one double acting hydraulic circuit.

WOODCRACKER® L	L 700	L 920	L 1200
Tongs opening (in)	28	35	47
Splitting force (depending on operating pressure) (lbs)	up to 48,500	upt to 48,500	up to 72,800
Deadweight (lbs)	630	820	2,400
Deadweight (incl. Stand unit) (lbs)	940	1,150	4,340
Recommended pump flow capacity ¹⁾ (gpm)	approx. 7 - 16	approx. 7 - 16	approx. 21 - 40
Recommended operating pressure ¹⁾ (psi)	2,600 - 3,500	2,600 - 3,500	3,200 - 3,900
Optional: Stand unit	•	•	•

Technical data and illustrations are not binding. Subject to changes for reasons of further development.

APPLICATION AREAS

- Splitting thick wood trunks.
- Pre-splitting wood allows a natural drying process and therefore increases biomass quality and energy yield.
- Can be used in all harvesting and processing methods of strong wood.
- Pre-splitting wood for further processing of split logs or chipped wood material.
- Easy supply of the pre-split material to chippers.



Stand unit for Woodcracker® L



Woodcracker® L1200 with stand unit - for the truck



Woodcracker® L700 with stand unit on timber trailer - low effort for splitting



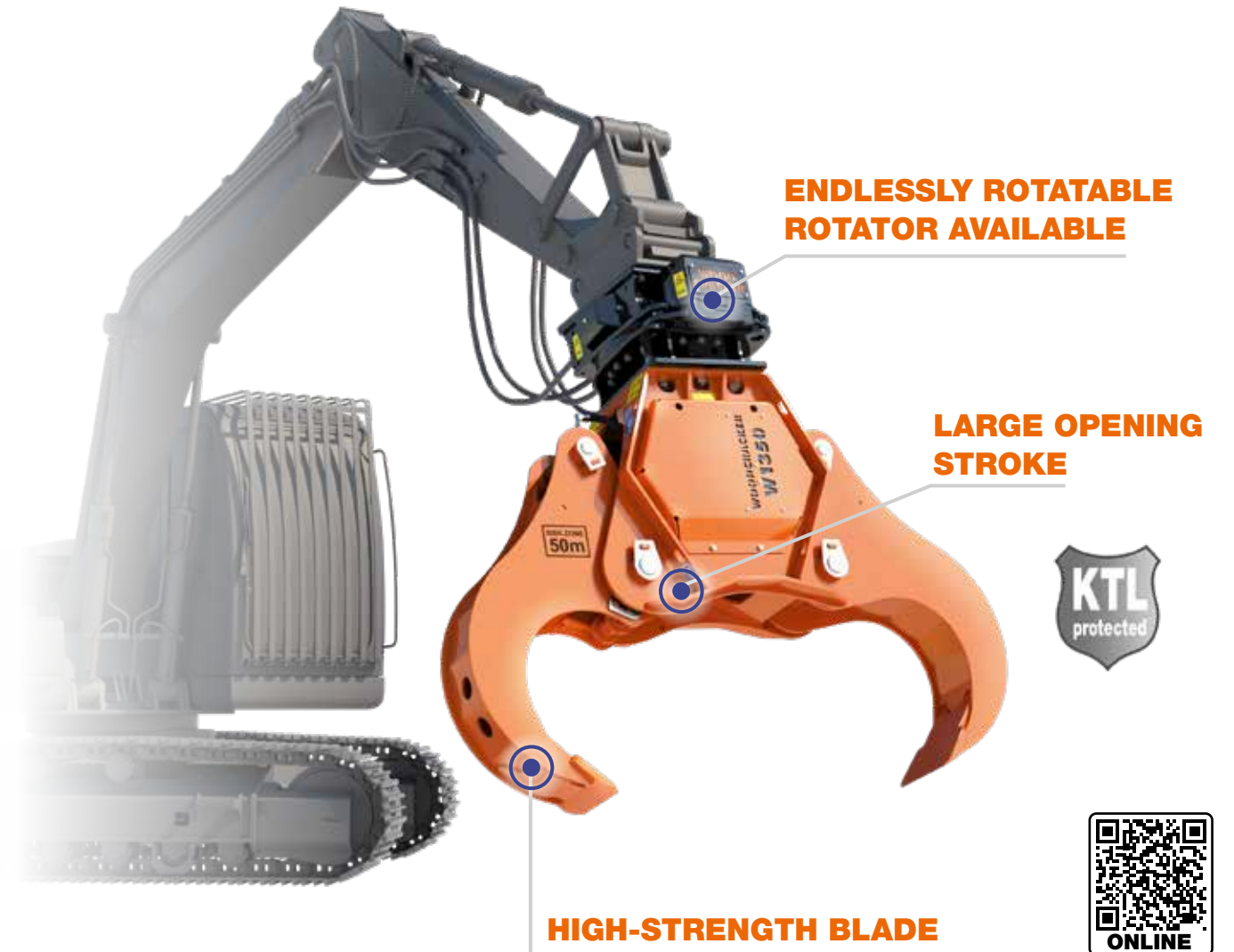
Woodcracker® L920 with stand unit on timber trailer - splitting and loading in one work step



Woodcracker® L700 with stand unit - in combination with the Woodcracker® CS620 crane



THE ORIGINAL - OVER 20 YEARS.



CHECK OUT YOUR BENEFITS!

- More performance and power in the shredder due to pre-splitting.
- Only a small shredder required due to pre-splitting.
- Decades of experience – **LEADER IN THE INDUSTRY!**
- Pre-split for chippers and for firewood.
- Break up oversized logs.
- Multiple mounting options.
- The professional tool for woodsplitting.
- Robust and proven technology – Low-wear and low-service.
- Durable KTL powder coating for long-term corrosion protection.
- Components made from Hardox® steel for extreme strength and wear resistance.



endlessly rotatable Rotator for flexible application

20 YEARS OF EXPERIENCE -
WOOD SPLITTING TONGS
THAT LAST!



Woodcracker® W600 on Takeuchi TB250 crawler excavator - pre-split material



Original Machine Woodcracker® W on KAISER walking excavator - in operation for 20 years



Woodcracker® W1350 on truck - pre-splitting wood for the chipper



Woodcracker® W1000 on Magni telehandler - various mounting options

TECHNICAL DATA



To operate the products, the excavator needs two double acting hydraulic circuits.

WOODCRACKER® W	W 600	W 820	W 1000	W 1350	W 1800
Tongs opening (in)	24	32	41	54	72
Splitting force at 3,500 psi (lbs)	57,300	57,300	57,300	75,000	103,600 ³⁾
Deadweight (incl. flange plate) (lbs)	730	950	1,380	2,320	4,630
Deadweight (incl. flange plate and Rotator) (lbs)	820	1,080	1,720	3,200	5,400
Recommended pump flow capacity ¹⁾ (gpm)	7 - 16	7 - 16	11 - 21	21 - 40	26 - 50
Recommended operating pressure ¹⁾ (psi)	2,800 - 3,600	2,800 - 3,600	2,800 - 3,600	3,200 - 3,900	3,500 - 4,400
Service weight of carrier vehicle ²⁾ (lbs)	13,300	22,100	30,900	44,100	66,200
Roller system	•	•	-	-	-
Optional: Rotator	•	•	•	•	•

Technical data and illustrations are not binding. Subject to changes for reasons of further development.

APPLICATION AREAS

- For the wood processing industry.
- Splitting thick wood trunks with minimal effort.
- Can be used in all harvesting and processing methods of strong wood.
- Pre-splitting wood allows a natural drying process and as a result an increase in biomass quality and energy yield.
- Splitting tongs can be used as a gripper.
- Pre-splitting wood for further processing of split logs or chipped wood material.
- Easy supply of the pre-split material to chippers.

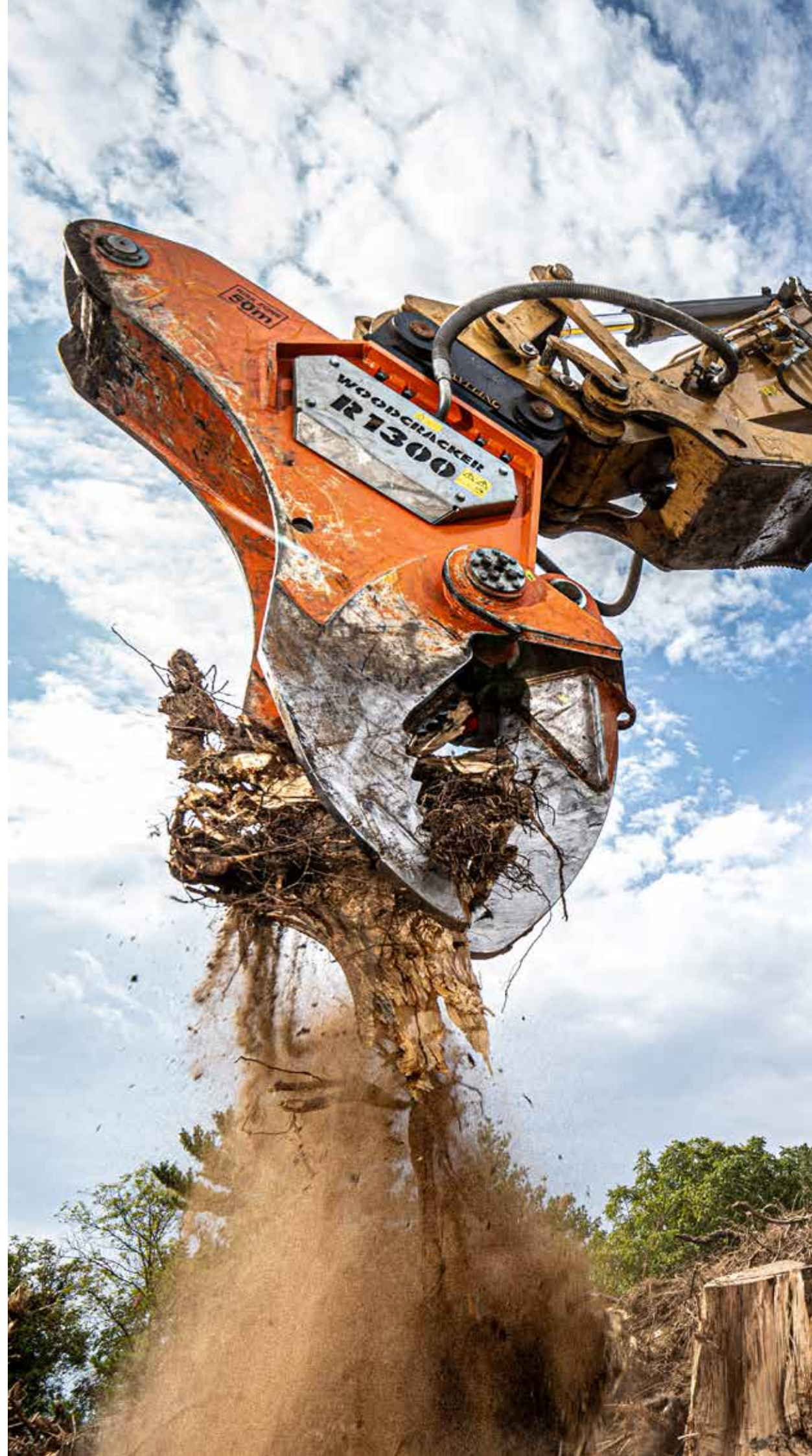


Also available: Woodcracker® W without Rotator!



To operate this product, the excavator needs one hydraulic circuit.

¹⁾ Depending on operating mode or equipment. ²⁾ Depending on specifications of the operation vehicle. ³⁾ At 4,400 psi working pressure.
• available - not available



FAST AND POWERFUL ROOT REMOVAL.



CHECK OUT YOUR BENEFITS!

- Saves time and energy during stump removal.
- Suitable for standard excavator.
- Speeds up the stump removal process.
- Large opening width.
- Remove and break up material in a single operation.
- Plug-and-play connection.
- Robust and proven technology – Low-wear and low-service.
- Durable KTL powder coating for long-term corrosion protection.
- Components made from Hardox® steel for extreme strength and wear resistance.



Woodcracker® R1300 on Doosan DX255 crawler excavator - chipping the rootstock for further processing

POWERFUL ROOT
CLEARING – LESS VOLUME,
MORE EFFICIENCY!



TECHNICAL DATA



To operate this product, the excavator needs one double acting hydraulic circuit.

WOODCRACKER® R	R 900	R 1300
Opening stroke (in)	38	51
Cutting force (depending on operating pressure) ¹⁾ (lbs)	up to 99,200	up to 143,300
Deadweight (incl. flange plate) (lbs)	2,860	4,950
Recommended pump flow capacity ¹⁾ (gpm)	26 - 50	32 - 66
Recommended operating pressure ¹⁾ (psi)	3,500 - 4,000	3,600 - 4,500
Service weight of carrier vehicle ²⁾ (lbs)	55,200	66,200

Technical data and illustrations are not binding. Subject to changes for reasons of further development.

APPLICATION AREA

- Removal of the entire rootstock from the ground.
- Chipping the rootstock for further processing by using a shredder.
- Reduction of the transport volume through pre-chipping.
- Large-scale recultivation measures.
- Cleaning the ground to let the plant inventory regrow.
- Splitting the rootstocks causes soil material to fall off.
- Requiring less force thanks to pre-splitting.
- Storm damage processing and natural disaster cleanup.



Woodcracker® R1300 on Liebherr R920 crawler excavator - careful removal of the entire rootstock from the ground



Woodcracker® R1300 on CAT330 crawler excavator - high splitting force



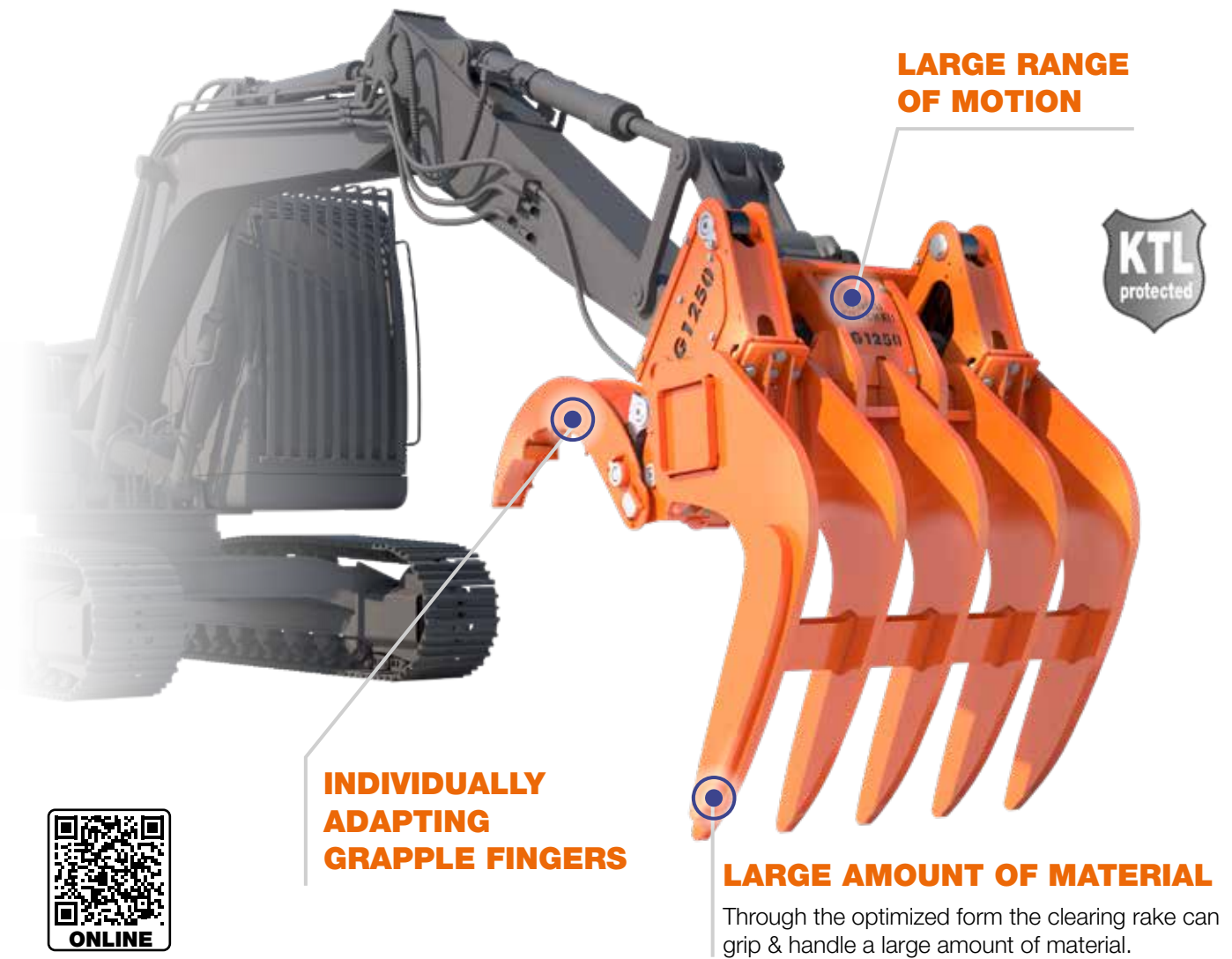
Woodcracker® R900 on CAT325 crawler excavator with Woodcracker® G1250 on Takeuchi crawler excavator



Woodcracker® R1300 on CAT325 crawler excavator - pre-chipping for the transport



MAXIMUM POWER. MINIMUM SETUP.



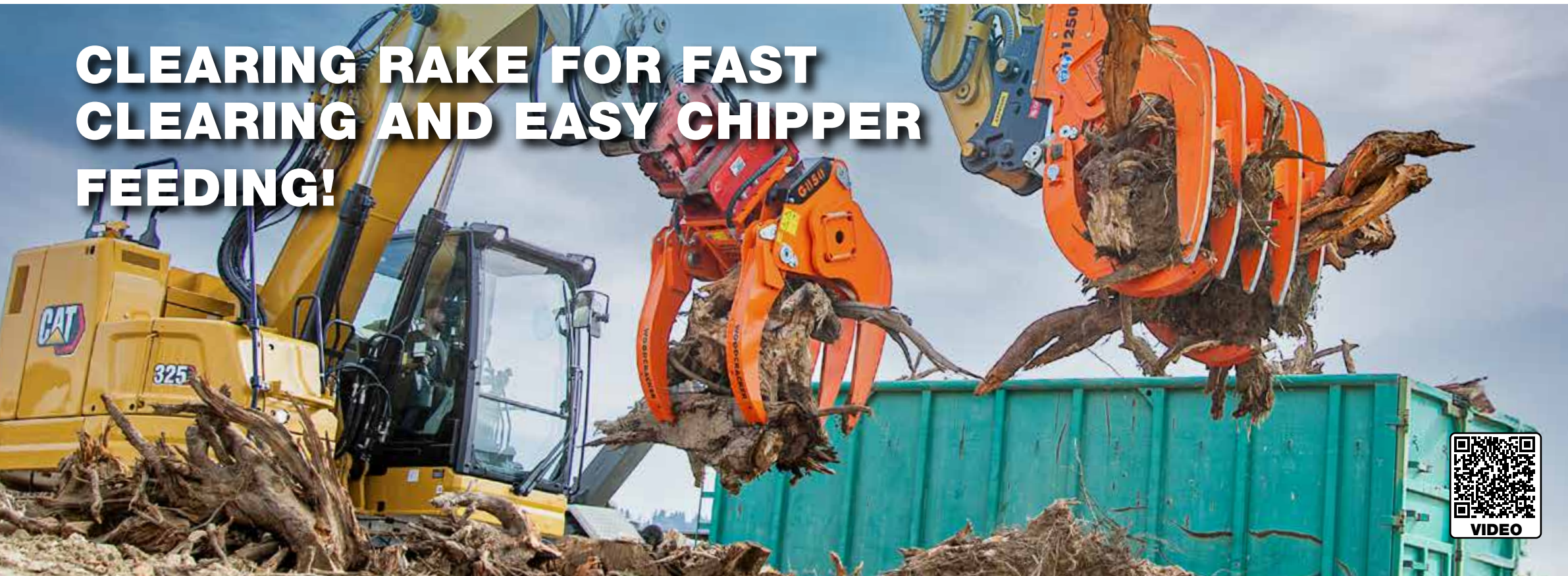
CHECK OUT YOUR BENEFITS!

- Plug-and-play connection.
- Large opening width.
- Fast and clean process.
- Suitable for standard excavator.
- Can also be used as a grapple for material handling.
- Robust and proven technology – Low-wear and low-service.
- Durable KTL powder coating for long-term corrosion protection.
- Components made from Hardox® steel for extreme strength and wear resistance.



The gripper fingers adjust individually to the crop.

CLEARING RAKE FOR FAST CLEARING AND EASY CHIPPER FEEDING!



TECHNICAL DATA



To operate this product, the excavator needs one double acting hydraulic circuit.

WOODCRACKER® G	G 850	G 1250	G 1650
Working width (in)	33	49	65
Deadweight (fully equipped incl. flange plate) (lbs)	1,360	3,350	3,770
Recommended pump flow capacity ¹⁾ (gpm)	11 - 16	13 - 24	13 - 24
Recommended operating pressure ¹⁾ (psi)	2,900 - 3,600	2,900 - 3,600	2,900 - 3,600
Service weight of carrier vehicle ²⁾ (lbs)	16,500 - 33,100	33,100 - 48,500	44,100 - 55,200

¹⁾ Depending on operating mode or equipment. ²⁾ Depending on specifications of the operation vehicle.

APPLICATION AREAS

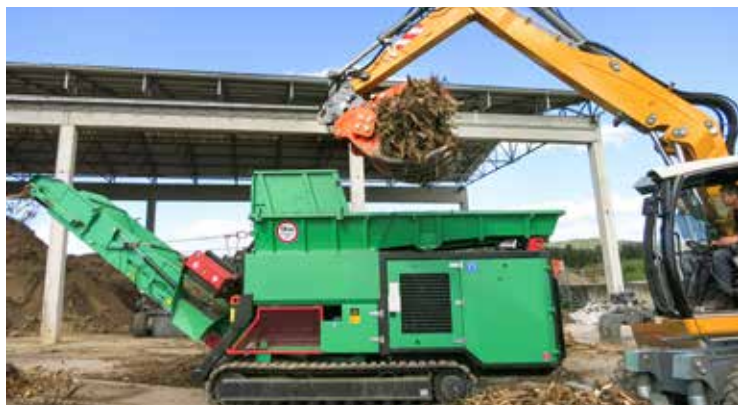
- Cleaning and maintenance of large areas.
- Collecting tree cuts and root materials.
- Landscape maintenance.
- Storm damage processing and natural disaster cleanup.
- Supporting follow-up machines (transport and chipping).
- Crop manipulating/handling.
- For land clearing and tree service companies.



Woodcracker® G1250 on Liebherr R924 crawler excavator - feeding the shredder



Woodcracker® G1250 on CAT325 crawler excavator - transport loading



Woodcracker® G1650 on Liebherr A920 wheel excavator chipping of the harvested material



Woodcracker® G1250 on CAT323 crawler excavator - high gripping volume



**TURN YOUR TRUCK INTO
A FELLING MACHINE!**



FAST ON SITE. PRECISE IN TREE FELLING.

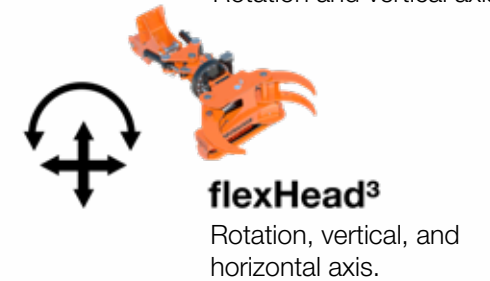
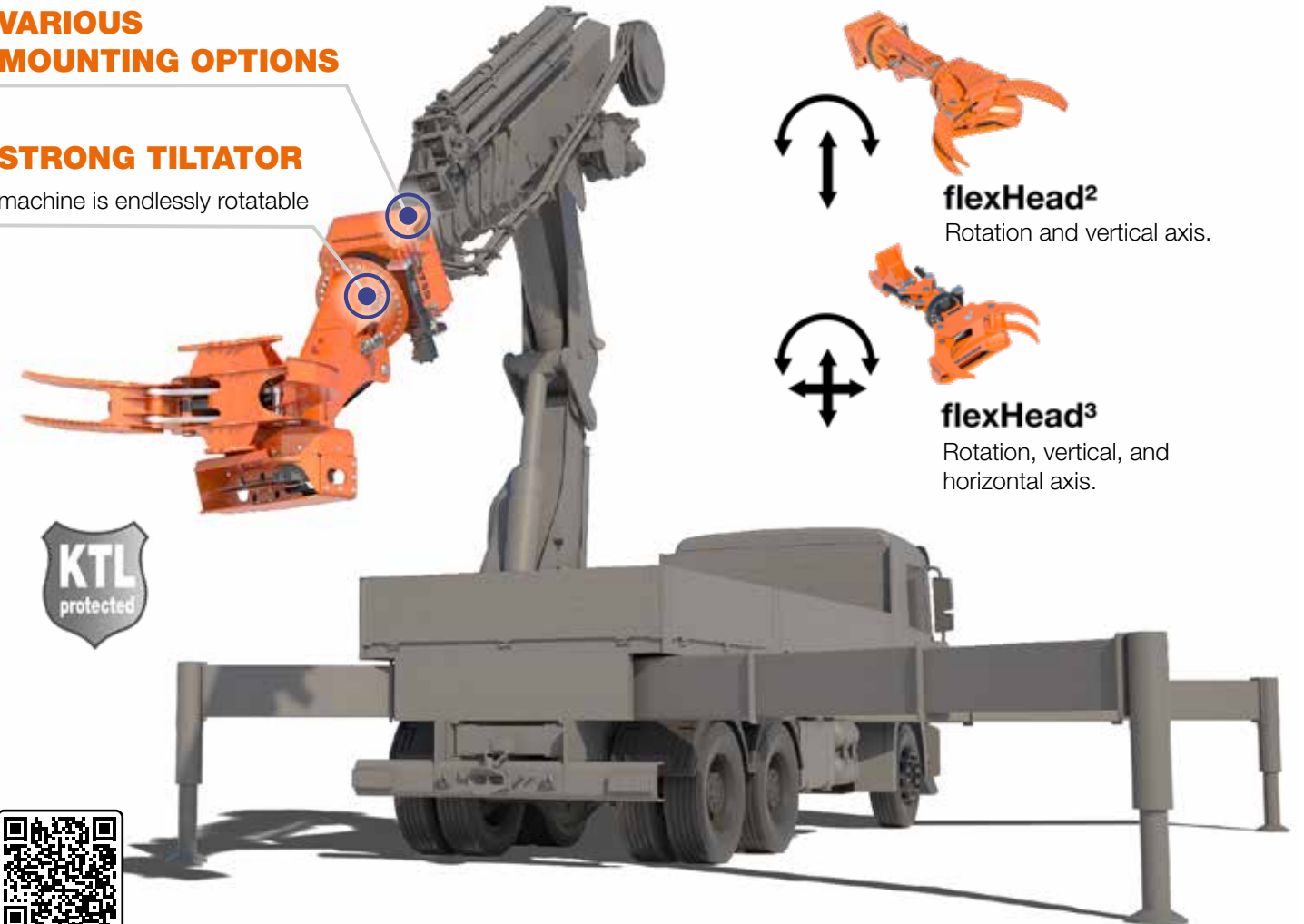
WOODCRACKER® CS flexHead

Felling system

VARIOUS MOUNTING OPTIONS

STRONG TILTATOR

machine is endlessly rotatable



CHECK OUT YOUR BENEFITS!

- Reach every angle you need. Perfect for horizontal limbs.
- Ideal for removing sections from tree crowns.
- Innovative hydraulics allow sections to be removed in a standing position.
- Safe working method for operators.
- Quick set-up at the respective construction site. Fast on the road.
- Various attachment options.
- Robust and proven technology – Low-wear and low-service.
- Made of high-strength Hardox® steel.



Woodcracker® CS750 flexHead² for tree care.

WORKING EFFICIENTLY. WORLDWIDE.

WORLDWIDE, PROS TRUST THE EFFICIENT FORESTRY MACHINES OF WESTTECH:

- Land clearing companies
- Tree service companies
- Farmers and rangers
- Contractors for-hire
- Excavator and construction companies
- Large land owners
- Road and railway network maintenance companies
- Power utility operators
- River engineering offices
- Building departments
- Municipality
- Military



WOODCRACKER®

Follow us!



**The WOODCRACKER TOOLS clean up
after natural disasters!**



WOODCRACKER
★ **NORTH AMERICA** ★



www.woodcracker.com



Woodcracker North America, Inc. • 10 Industrial Way • AMESBURY, MA 01913 • UNITED STATES
Tel. +1 (857) 567-7912, e-mail: sales@woodcracker.com • www.woodcracker.com

WNA_2026/01