

endlessly rotatable Rotator
optional: 2 drive motors
for W1350 & W1800

premium pin
bearing

The **opening stroke** only determines the
largest end piece and is not decisive for the
maximum diameter that can be split.

high-strength blade made from Hardox® steel

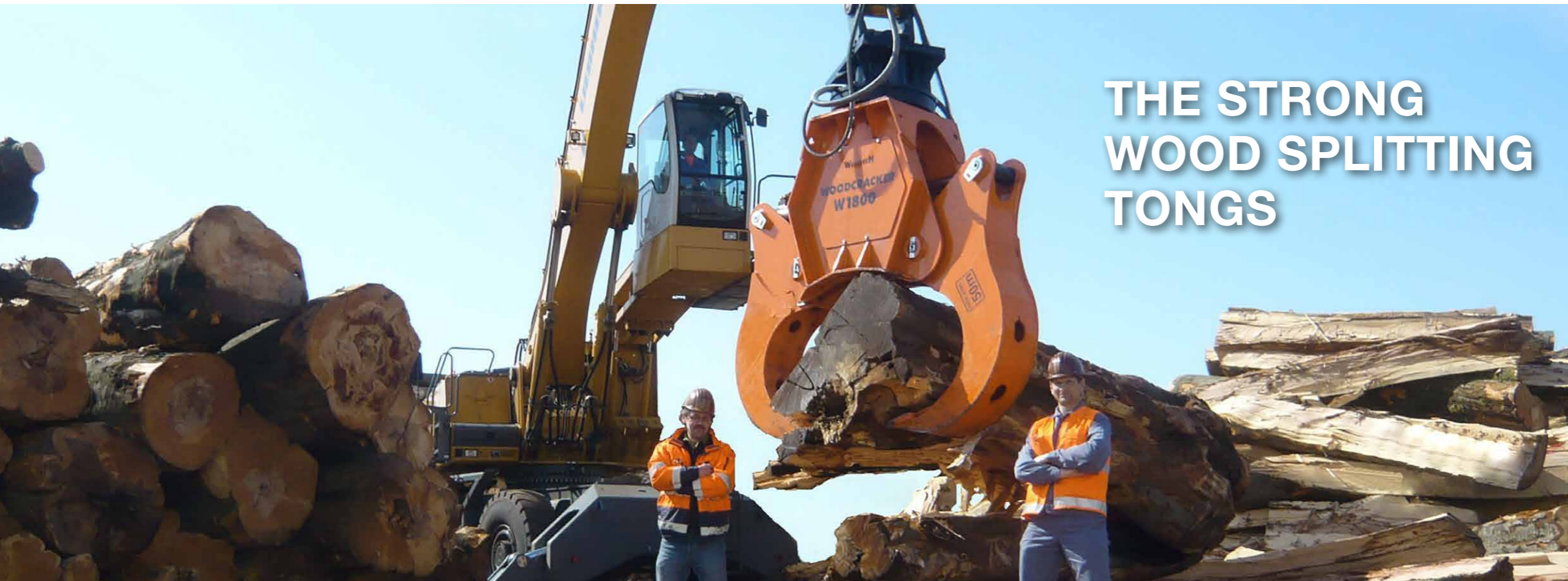


KEY FACTS

- Available in different sizes suitable for the carrier vehicle.
- Proper and simple connection.
- Plug-and-crack connection.
- Easy supply of the pre-split material to chippers.
- Robust and proven technology – Low-wear and low-service.
- KTL-primed (cathodic dip-coating) and powder coating. Made of high-strength Hardox® steel.



endlessly rotatable Rotator for flexible application



THE STRONG WOOD SPLITTING TONGS



Easy supply of the pre-split material to chippers.



Splitting thick wood trunks with minimal effort.

TECHNICAL DATA



PATENTED

WOODCRACKER® W	W 600	W 820	W 1000	W 1350	W 1800
Tongs opening (in)	24	32	41	54	72
Splitting force at 3,500 psi (tons)	26	26	26	34	47 ³⁾
Deadweight (lbs)	680	820	1,300	2,200	4,400
Recommended pump flow capacity ¹⁾ (gpm)	7 - 16	7 - 16	11 - 21	21 - 40	26 - 50
Recommended operating pressure ¹⁾ (psi)	2,800 - 3,600	2,800 - 3,600	2,800 - 3,600	3,200 - 3,900	3,500 - 4,400
Service weight of carrier vehicle ²⁾ (tons)	6	10	14	20	30
Roller system	•	•	-	-	-
Optional: Autospeed	•	•	•	-	-
Optional: Rotator	•	•	•	•	•

¹⁾ Depending on operating mode or equipment. ²⁾ Depending on specifications of the operation vehicle. ³⁾ At 4,400 psi working pressure.
 • available - not available

Technical data and illustrations are not binding. Subject to changes for reasons of further development.

APPLICATION AREAS

- For land clearing and tree service companies.
- Splitting thick wood trunks with minimal effort.
- Can be used in all harvesting and processing methods of strong wood.
- Pre-splitting wood allows a natural drying process and as a result an increase in biomass quality and energy yield.
- Splitting tongs can be used as a gripper.
- Pre-splitting wood for further processing of split logs or chipped wood material.
- Easy supply of the pre-split material to chippers.



Pre-splitting wood allows a natural drying process.



Various mounting options.